



6 Channel Upgrade Kit for InvisiPac™ Hot Melt Delivery Systems

3A4403D

EN

*For upgrading a 4 channel system to a 6 channel system. For professional use only.
Not approved for use in explosive atmospheres or hazardous locations.*



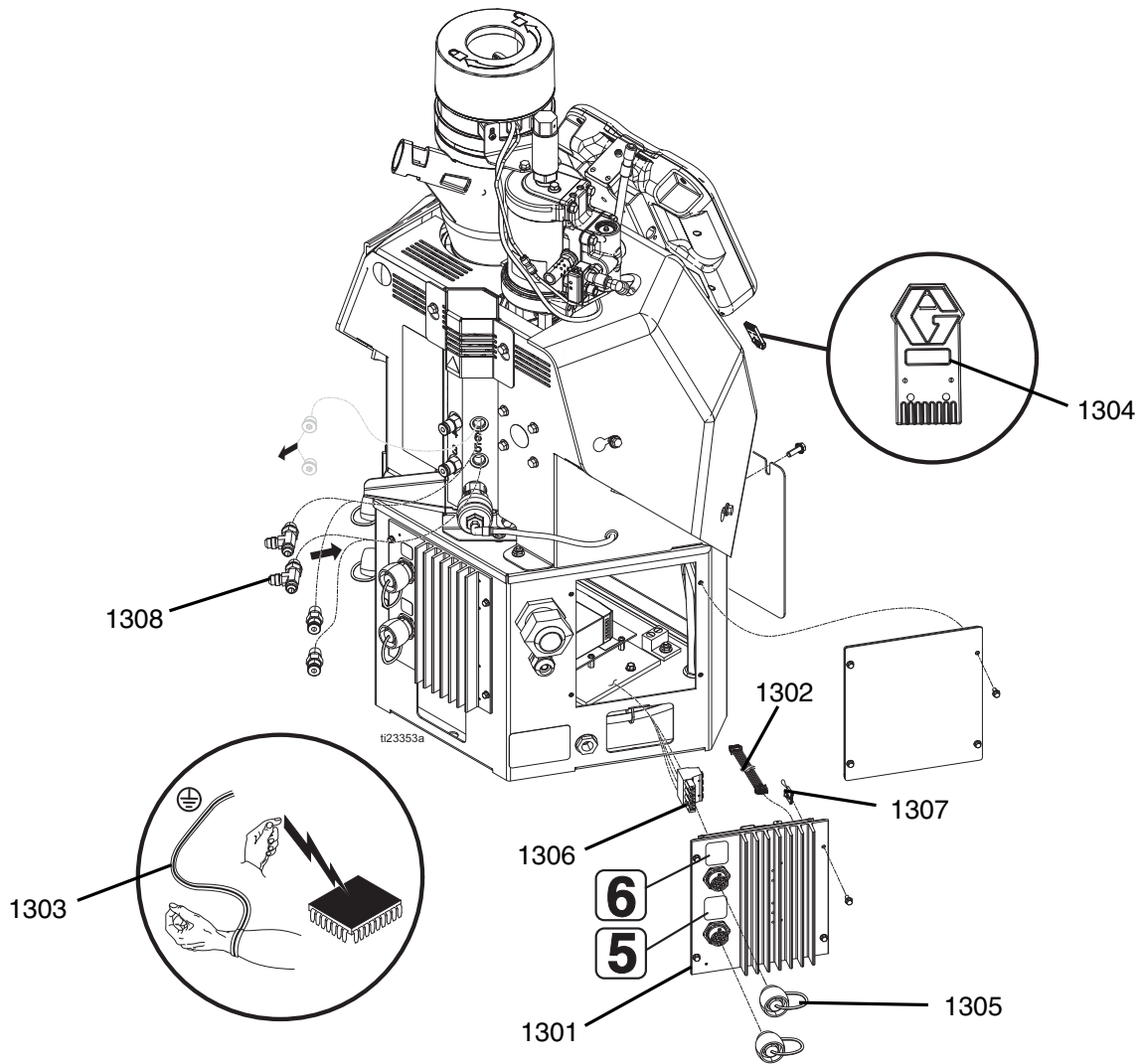
Important Safety Instructions

Read all warnings and instructions in this manual and in the InvisiPac Hot Melt Delivery System manual. Save all instructions.

4 Channel Upgrade Kit 24V529


6 Channel Upgrade Kit, 24V529

Use this kit to upgrade a 4 channel system to a 6 channel system.



Ref.	Part	Description	Qty.
1301	24V510	MODULE, GCA, MZLP	1
1302	16T087	CABLE, jumper, male/male, 4 in.	1
1303	112190	STRAP, wrist, grounding	1
1304	24R324	TOKEN, software upgrade	1
1305	16T440	CAP, jam nut, sealing	2
1306	127425	HARNESS, MZLP #3	1
1307	16W035	CONNECTOR, jumper	1
1308	127208	FITTING, tee	2
	116793	FITTING, 90° elbow (not shown)	2
	126961	FITTING, 45° elbow (not shown)	2

6 Channel Upgrade Kit Installation



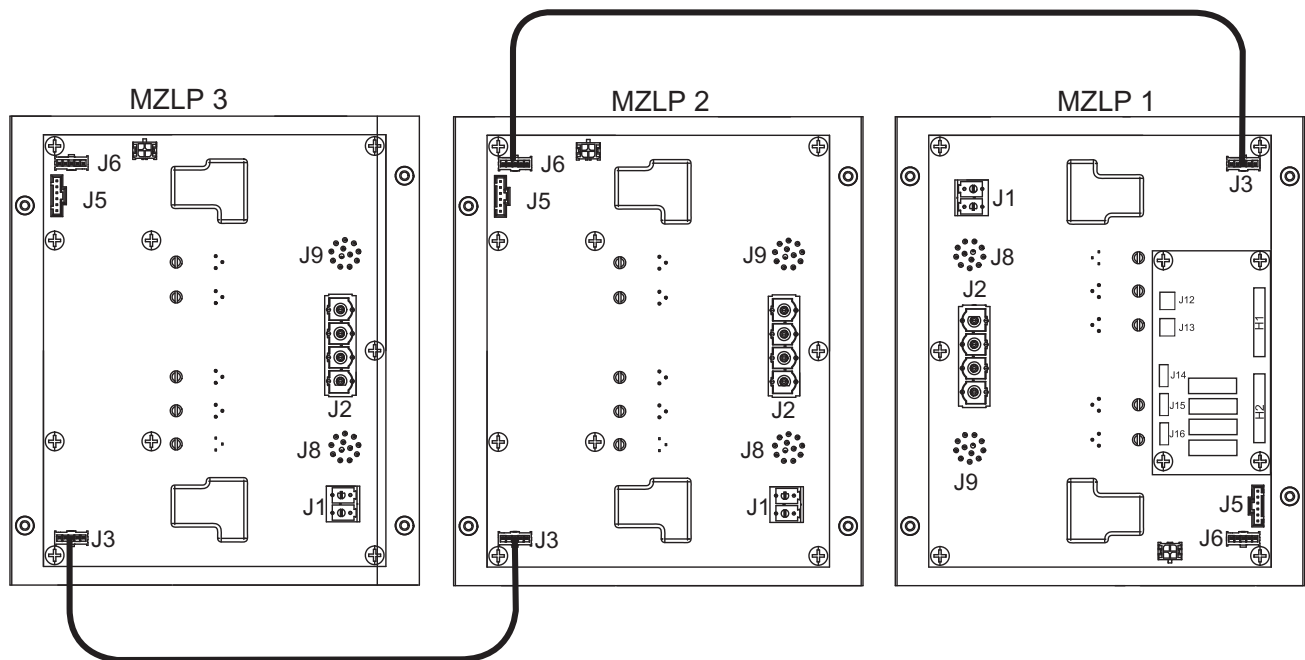
The equipment must be grounded. Improper grounding, setup, or usage of the system can cause electric shock. Disconnect the plug from the power outlet or turn off the circuit breaker for incoming power.

Equipment surfaces and fluid that is heated can become very hot during operation. To avoid severe burns, do not touch hot fluid or equipment.

1. Perform the **Pressure Relief Procedure** (see the InvisiPac manual).
2. Place grounding wrist strap (1303) over your wrist and secure other end to a grounded surface.
3. Set the kit's MZLP (1301) rotary switch to "3".
4. Remove screws (BB) then remove plate (AA) from system.
5. Use screws (BB) to install MZLP (1301) onto system.

NOTE: The new MZLP (1301) will be referred to as MZLP 3, and the original MZLPs that came with the system will be referred to as MZLP 1 and MZLP 2 from here on.

6. Remove electrical enclosure front access door.
- NOTE:** Do not force the electrical connection. Minimal force is required to seat the connector. If resistance is felt, stop and verify the connector orientation. Verify the connector has "Locked" by gently pulling on the white connector housing.
7. Connect CAN jumper cable (1302) to MZLP 2 connector J3 and connect other end of jumper cable (1302) to MZLP 3 connector J3.
8. Install jumper connector (1307) in J5 on MZLP 3.
9. Connect wires from power harness (1306) between AWB connector J5 and MZLP connector J2.
10. Remove plugs (CC) from fluid manifold and replace with straight fittings (1309), tee fittings (1308), or the extra fittings included with the InvisiPac system. Use the fittings that meet your hose routing needs.
11. To ensure your InvisiPac system has the latest software, insert token (1306) into the ADM. Follow the **Software Update Procedure** in the InvisiPac manual.



Step 7: Install jumper cable (1302).

ti23597a

Graco Information

Sealant and Adhesive Dispensing Equipment

For the latest information about Graco products, visit www.graco.com.

For patent information, see www.graco.com/patents.

TO PLACE AN ORDER, contact your Graco distributor, go to www.graco.com, or call to identify the nearest distributor.

If calling from the USA: 1-800-746-1334

If calling from outside the USA: 0-1-330-966-3000

All written and visual data contained in this document reflects the latest product information available at the time of publication. Graco reserves the right to make changes at any time without notice.

Original instructions. This manual contains English. MM 3A4403

Graco Headquarters: Minneapolis

International Offices: Belgium, China, Japan, Korea

GRACO INC. AND SUBSIDIARIES • P.O. BOX 1441 • MINNEAPOLIS MN 55440-1441 • USA
Copyright 2016, Graco Inc. All Graco manufacturing locations are registered to ISO 9001.

www.graco.com

Revision D, September 2019